



GEMS OF PURPOSE

Volume 3, Issue 1

January 2008

BETHPAGE LODGE #521, F&AM OF TENNESSEE

Dr. David E. Stafford, PM-Sec'y
550 E. Bledsoe Street, 23-B
Gallatin, TN 37066

Douglas Stinson, Worshipful Master
bethpagelodge521@bellsouth.net
www.mastermason.com/bethpagelodge521

www.grandlodge-tn.org/

Special points of interest:

- January 31—School of Instruction, Eat at 6pm and Work at 7pm. All Master Masons welcome.
- January 17—Stated Meeting, 7:00 pm.
- February 21—Stated Meeting, 7:00 pm.



Inside this issue:

Officers	1
Magic Flute	1
Website to Check Out	2
Research Societies	3
Blue Lodge?	4
Flute, Continued	4

Lodge Officers Elected for 2008

At the December Stated Meeting, the members of Bethpage Lodge elected officers for 2008.

Worshipful Master	Douglas Stinson, PM
Senior Warden	William Bowen
Junior Warden	Joshua Perry
Treasurer	Lee Roy Grizzle, PM
Secretary	David Stafford, PM
Senior Deacon	Ferrell Fuqua
Junior Deacon	Timothy Roberson, PM
Senior Steward	Arthur Lane, PM
Junior Steward	Lee Willoughby
Tiler	James F. Templeton
Chaplain	Elder Kenneth Woodall

The Lodge looks forward to a progressive year filled with fellowship and enlightenment, and welcomes all Master Masons to visit and enjoys the pleasures of Masonry with us.

The lodge meets on the 3rd Thursday of each month at 7:00 pm.∞

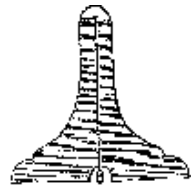
Mozart's *The Magic Flute* at MTSU

Of interest to the Masonic Fraternity, the MTSU Opera will be performing Brother Mozart's *The Magic Flute*. There will be two performances. The first is January

25 and the second is January 26. Both performances will be at 7:30 pm and will be in the T. Earl Hinton Music Hall of the Wright Music Building on the campus. According to

the Music Department, admission is free.

The Magic Flute is well-known as being the best example of Masonic opera. The musical score Continued on page 4 (Flute) . . .

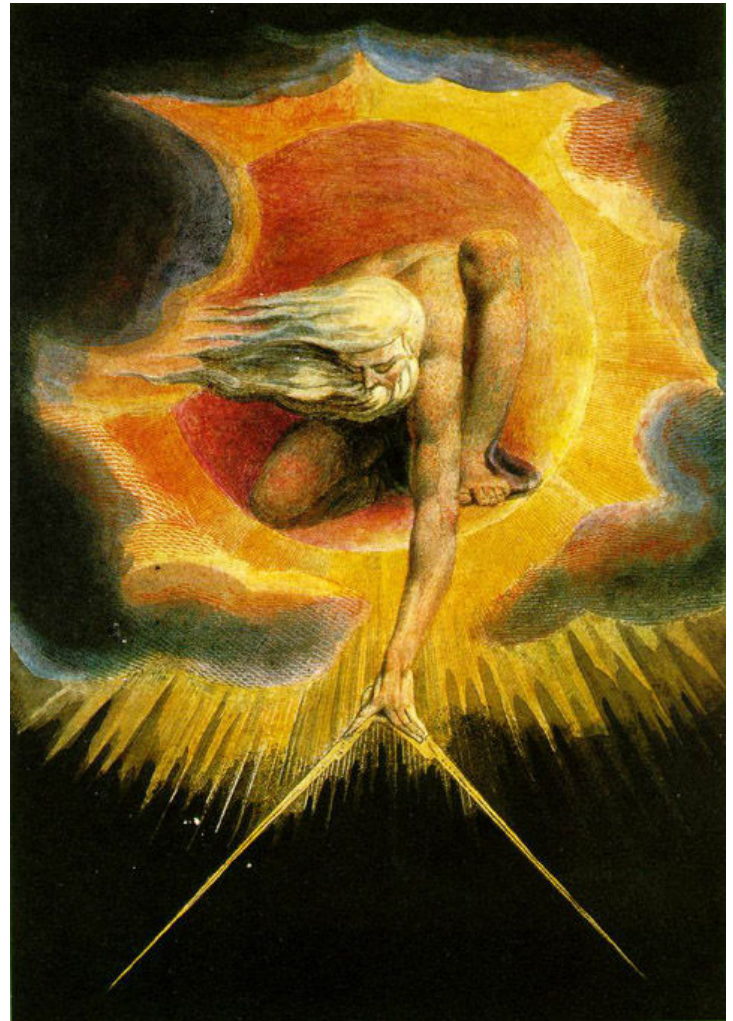


A WEBSITE TO DEFINITELY CHECK

The webpage for the Grand Lodge of British Columbia and Yukon is a virtual treasure-trove of Masonic knowledge. The address to the site is: <http://freemasonry.bcy.ca/sitemap.html> This link will connect you to the sitemap, from which you will be able to explore this informative site. Below are a few examples of the great graphics and information available from the site.∞



These are what are termed the Masonic Virtues of Brotherly Love, Relief and Truth. The Christian Graces are [Faith, Hope and Charity](#). The four Cardinal Virtues are [Justice, Prudence, Temperance and Fortitude](#).



The Ancient of Days Measuring Time, 1794

William Blake

Watercolour, black ink and gold paint, over a relief etched outline painted in yellow. 9 1/4 x 6 5/8 [23.5 x 17.0]

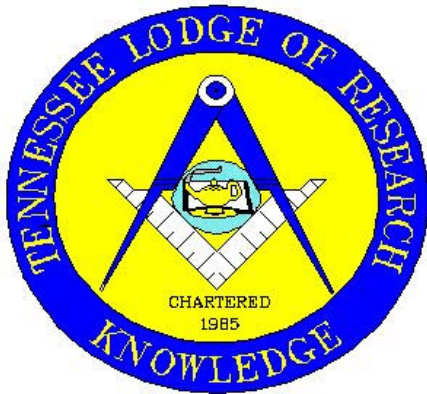
The figure is derived from the work of 18th century artists such as Pellegrini Tiboldi ("Neptune" and "Christ in Glory") and the Christ figure in Michelangelo's "Conversion of St. Paul" in the Pauline Chapel. Blake also made use of the compasses in [The Book of Thel](#)

Earlier use of compasses as a symbol for the act of creation can be found in [medieval manuscripts](#) and [early Bibles](#). Also note Albrecht Dürer's [Melencolia](#), and [Astronomer](#).

Research Societies Worth Belonging To

Masonry has many organizations that are worth belonging to; however, there are a few that are dedicated solely to assisting Masons to growing in enlightenment. These research societies not only offer Masons an opportunity to read scholarly works about the

Craft but to also share their own writing with like minded and intellectually motive brothers. Two of the best deals for the money are The Tennessee Lodge of Research and the Scottish Rite Research Society. Below is a brief description of each and directions on how you can join each.∞



The Tennessee Lodge of Research is hidden gem in Tennessee Masonry. It was organized in 1983 and received its charter in 1985. The lodge meets four times a year on the second Saturdays of March, June, September, and December. There is usually a meal served at each meeting, and there is always an insightful Masonic talk and discussion on various topics concerning Masonry today. Members receive a quarterly newsletter and a copy of the proceedings for the year. The proceedings containing the papers submitted to the Lodge throughout the year. Dues are \$10.00 a year and there is a one-time \$5.00 joining fee. A petition may be obtained from the Lodge of Research's webpage (<http://www.grandlodge-tn.org/TLR/tlr.htm>). Once the petition is completed, it should be mailed to Bro. George Ladd, PM-Sec'y, 4521 Turkey Creek Road, Williamsport, TN 38487.



“Since 1991, the Scottish Rite Research Society (SRRS) has become one of the most dynamic forces in Masonic research today, pursuing a publication program emphasizing quality—both in content and physical form. While it has its administrative offices at the House of the Temple in Washington, D.C., it is open to all. We encourage anyone interested in deepening his or her understanding of Freemasonry to become a member and make the SRRS your research society” (website).

Membership in the Research Society provides a 10% discount on all books and Research Society Items at the Supreme Council's Online Store, a copy of the *Heredom*, four issues of the *The Plumblines*, and a bonus book each year. The *Heredom* and the bonus books are nice hardcover books that are not only enlightening reads but look great on a shelf. Membership is \$45.00 a month or life membership is \$750.00. It is possible to join the society from the Supreme Council's webpage (<http://www.scottishrite.org/what/educ/srrs.html>). It is a great value for the money.∞



There is a third opportunity provided to Scottish Rite Masons in the Nashville area. The Scottish Rite Study Club meets at 5:00 pm before the Stated Meetings of the Nashville Valley at the Grand Lodge Building. Stated Meetings are held on the second Tuesday of each month, excluding months of reunions, July, and August. The Study Club is conducted by Brothers Joe Edward and Dr. Thomas Driber. Dr. Driber has a phenomenal intellect, and all Scottish Rite Masons would enjoy his lessons. There is no cost to attend the Study Club, and following the Stated Meeting dinner is served in the Grand Lodge Dining Room.

Bethpage Lodge #521, F&AM of Tennessee

Dues for 2008 are \$50.00. Master Masons belonging to Bethpage Lodge that have not paid their dues, please mail them to the secretary as soon as possible.

Bethpage Lodge #521, F&AM
C/o David E. Stafford, PM-Sec'y
550 E. Bldesoe Street, Apt. 23-B
Gallatin, TN 37066

Why is the Lodge Blue?

We routinely refer to the organization that confers the Three Craft Degrees as a Blue Lodge, but why do we do this? According to Mackey's



encyclopedia, a blue lodge is "any symbolic Lodge, in which the first three degrees of Masonry are conferred, is so called from the color of its decorations" (p. 134). Blue "is emblematically the color of Masonry. It is the appropriate tincture of the Ancient Craft degrees. It is to the Mason a symbol of universal friendship and benevolence, as it is the color of the vault of heaven, which embraces and covers the whole globe, we are thus reminded that in the breast of every brother these virtues should be equally as extensive. It is therefore the only color, except white, which should be used in a Master's Lodge" (p. 133). As may be remembered from the Entered Apprentice degree, "The covering of a Lodge is the canopy of heaven, where good Masons hope at last to arrive . . ." Many Lodge's of antiquity had ceilings painted blue, symbolic of the heavenly sky.∞

Freemasonry is "veiled in allegory and illustrated by symbols" because these are the surest way by which moral and ethical truths may be taught. It is not only with the brain and with the mind that the initiate must take Freemasonry but also with the heart.

-C. H. Claudy



Brother Mozart

Flute, Continued from Page 1

was composed by Brother Mozart and the libretto, the text or words of a dramatic musical works, is officially accredited to Emanuel Schickaneder. Mozart and Schickaneder were both Masons; although, Schickaneder was never a dedicated Masons and was sporadic in his lodge membership. Mozart was a member of New Crown Lodge.

Masonry in Vienna was experiencing a great deal of political unrest, and it would be soon following the first performance of *The Magic Flute*, on September 30, 1791, that Freemasonry would be outlawed. Mozart is reported to have interwoven the Masonic lessons taught to him within the context of the opera to spread the philoso-

phy of Freemasonry before the ban.

Take your wife to this free performance for a Masonic and enjoyable night out.

For more information and an outline of themes in *The Magic Flute* visit www.freemasonry.bcy.ca/biography/mozart_a/mozarts_magic_flute.html ∞